

# **Studuino Setup Guide**

---

## **Installing USB Device Drivers**

Published 2014/11/01

Revised 2023/04/07



## Version History

Date	Content
11/1/2014	First version
1/16/2017	Updated for new Studuino website
4/14/2017	Updated for new Studuino website
1/22/2018	Revised to include OS and software updates
4/7/2023	Updated steps for installing USB device drivers on Windows

## Index

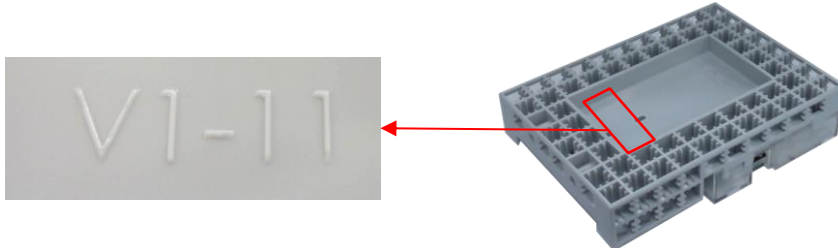
1. Getting Started.....	1
2. Windows .....	2
2.1. Automatic Installation .....	2
2.1.1. Windows 10 .....	3
2.2. Manual Installation .....	4
2.2.1. Downloading the Driver .....	4
2.2.2. Installation.....	5
2.3. Checking the Connection .....	8
3. Mac OS X .....	12
3.1. Manual Installation .....	12
3.1.1. Downloading the Driver .....	12
3.1.2. Installation.....	12

## **1. Getting Started**

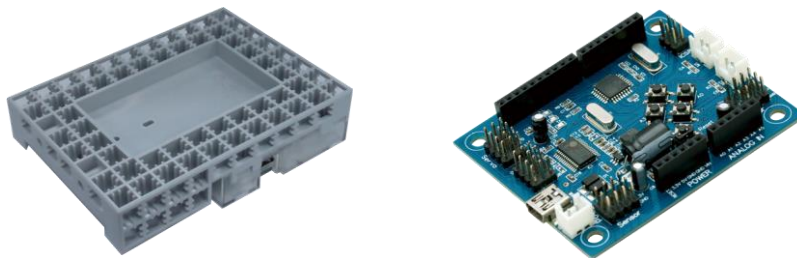
This manual explains how to install the USB device driver for your Studuino. It's divided into sections for Windows and Mac OS X. Be sure to turn to the page for your operating system. The information in this manual is subject to revision at any time.

## 2. Windows

There are two versions of the driver depending on your Studuino. If your Studuino is a newer model with V1-11 printed on the underside, proceed to 2.1.

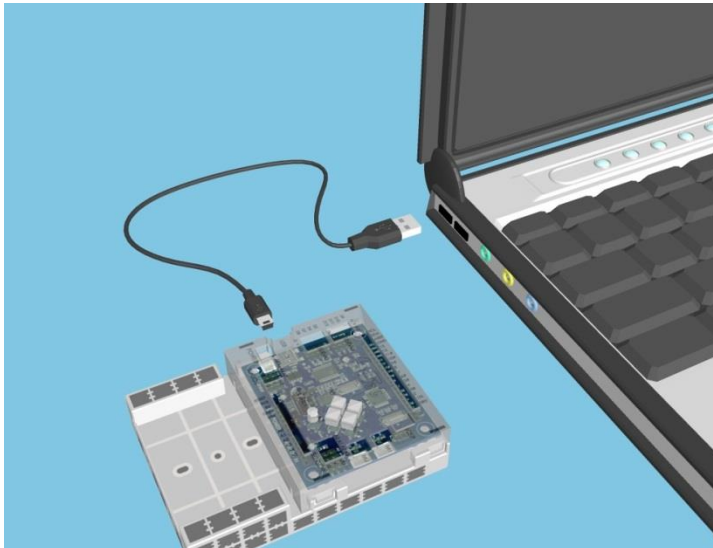


If your Studuino is a legacy model with no V1-11 mark or without a Studuino mount, proceed to 2.2.



### 2.1. Automatic Installation

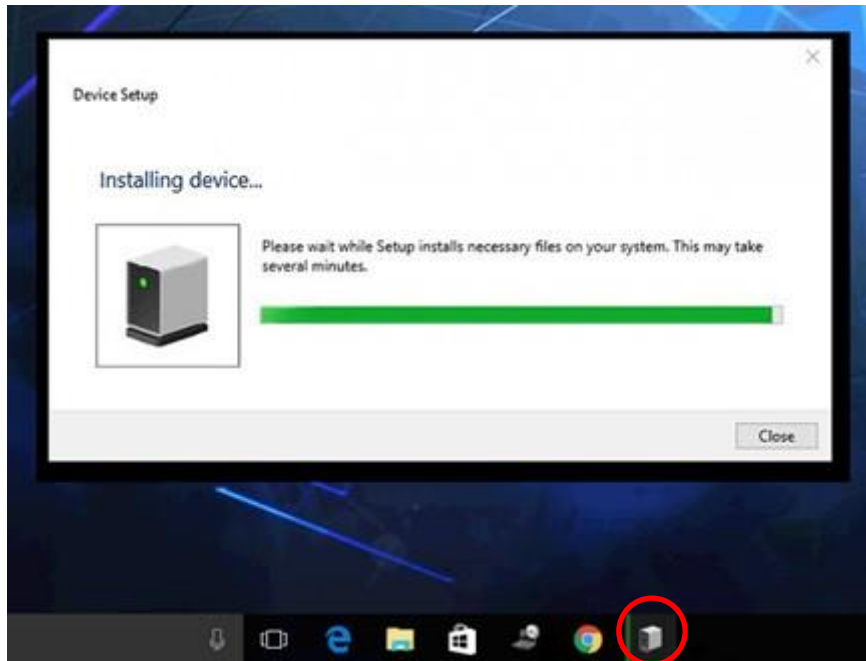
Computers running Windows 7 or later with an active Internet connection will install the driver automatically when you connect your Studuino to your computer with a USB cable.



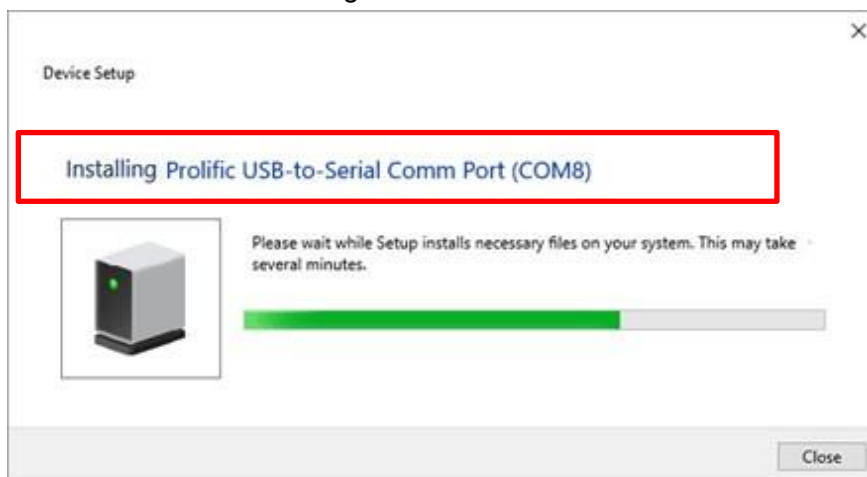
### 2.1.1. Windows 10

This section shows the installation process on Windows 10. This process works the same way on Windows 7, 8.1, and 11, though each version of Windows will look slightly different.

- ① Windows Update will check for and download the available driver.



- ② It will then install the driver and let you know that the COM port is ready to use once the installation has been completed. Proceed to step ② in 2.3. **Checking the Connection** to check if the driver is working.



If you don't see a window notifying you that the installation has finished, proceed to 2.2 to install the driver manually.

## 2.2. Manual Installation

Download the installation file in advance before proceeding. If your computer doesn't have an active Internet connection, download the file on a computer with an active connection and use a USB stick or other device to transfer it to your computer.

### 2.2.1. Downloading the Driver

- ① Follow the URL below to download the driver for your computer.

<https://www.artec-kk.co.jp/studuino/en/select3.php>

- ② Choose the right driver for your device.



Click the left button for newer models with **V1-11** printed on the underside of the Studuino. Owners of legacy Studuinos with no V1-11 mark or without a Studuino mount should click the button on the right.

## 2.2.2. Installation

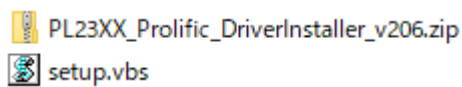
Proceed to **2-2-2-1** to install the driver for your new Studuino or to **2-2-2-2** to install it for your legacy model.

### 2-2-2-1. New Drivers

- ① Right-click **usb\_driver.zip** and choose **Extract All** from the context menu to extract the zip file.

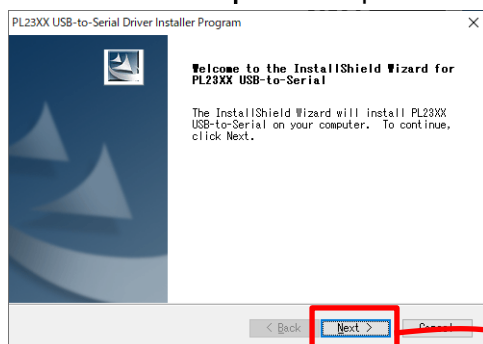
- ② You'll see the following files in the destination folder:

★ You will not see the **.zip** or **.vbs** if your system is set to hide file extensions.



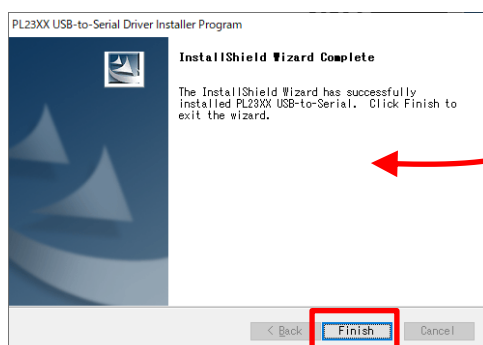
Double-clicking **usb\_driver.zip** will open a window that shows these files, but you won't be able to proceed with the installation from here. **Be sure to right-click the file and choose **Extract All** from the context menu.**

- ③ Double-click **setup.vbs** and proceed with the installation.

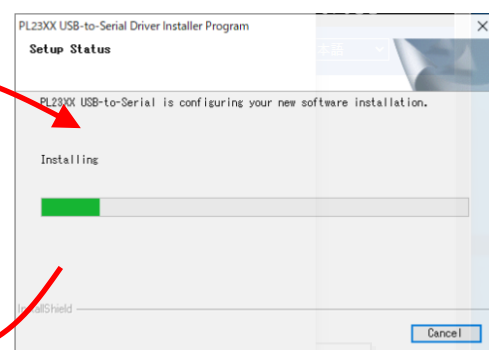


The setup window will appear.

Click Next.

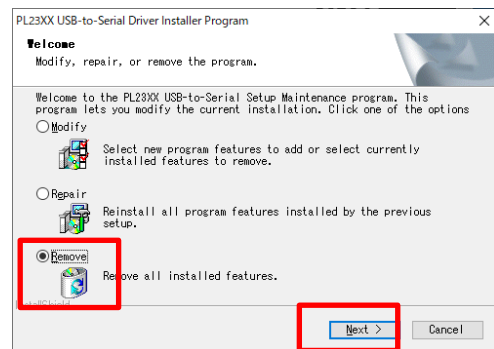


Click Finish once the installation has finished.



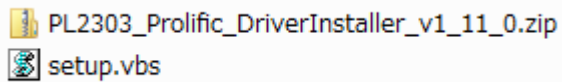
This window shows that the driver is being installed.

You'll see the window to the right if the driver has already been installed. Click the radial button next to **Remove**, then **Next** to remove the driver before repeating step ③.



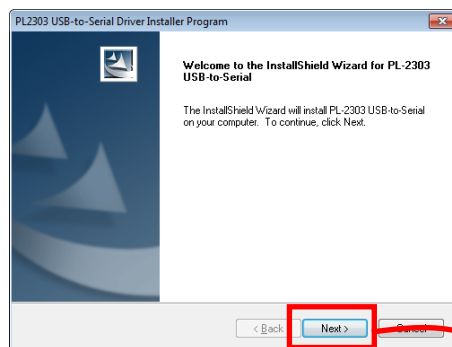
## 2-2-2-2. Legacy Drivers

- ① Right-click **usb\_driver\_ta.zip** and choose **Extract All** from the context menu to extract the zip file.
- ② You'll see the following files in the destination folder:
  - ★ You will not see the **.zip** or **.vbs** if your system is set to hide file extensions.



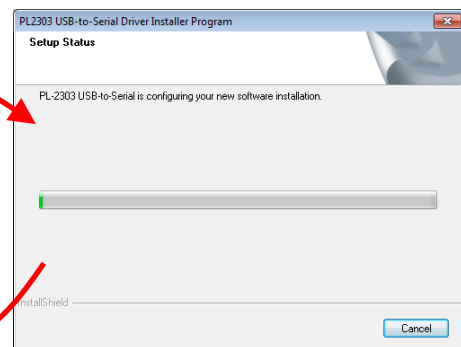
Double-clicking **usb\_driver\_ta.zip** will open a window that shows these files, but you won't be able to proceed with the installation from here. **Be sure to right-click the file and choose **Extract All** from the context menu.**

- ③ Double-click **setup.vbs** and proceed with the installation.

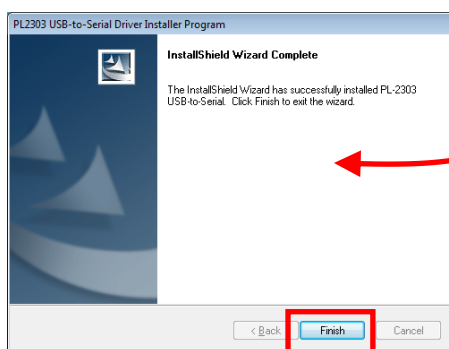


The setup window will appear.

Click Next.

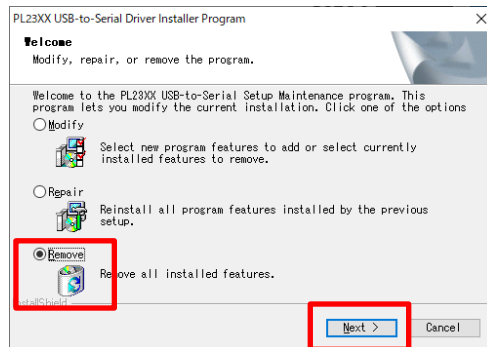


This window shows that the driver is being installed.



Click Finish once the installation has finished.

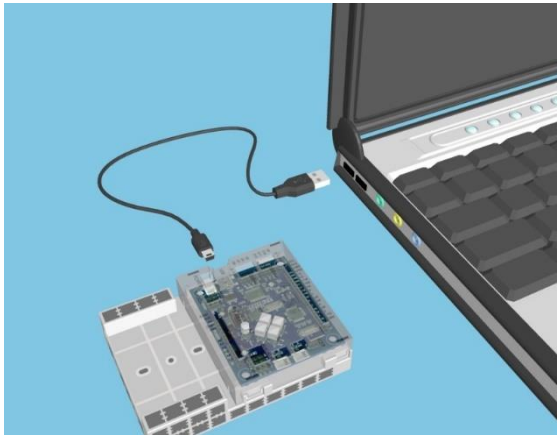
You'll see the window to the right if the driver has already been installed. Click the radial button next to **Remove**, then **Next** to remove the driver before repeating step ③.



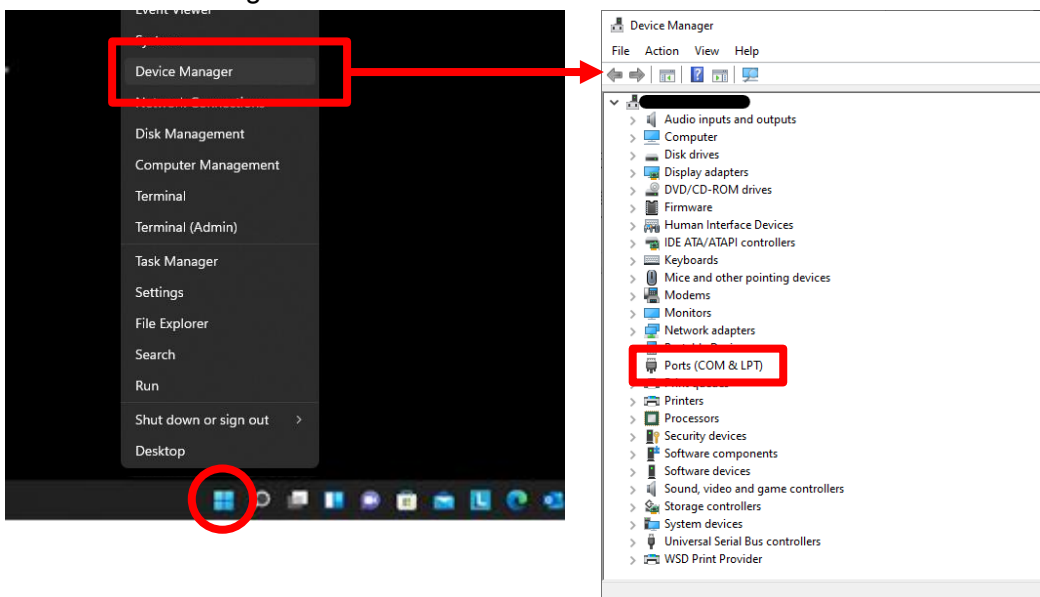
## 2.3. Checking the Connection

Follow these steps to check if your Studuino is connected to your computer.

- ① Start by plugging your Studuino into the PC using a USB cable.









- ② Right-click the **Start** button, click **Device Manager**, then double-click **Ports (COM & LPT)** in the Device Manager window.



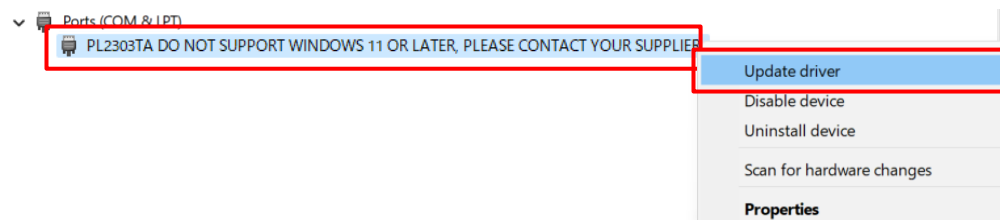
- ③ After completing the update, you should see **Prolific PL2303GS USB Serial COM Port (COM\*)** or **Prolific USB-to-Serial Comm Port (COM\*)** appear in the Device Manager. Your Studuino can now connect to your computer.

★ These ports may be different for your computer.

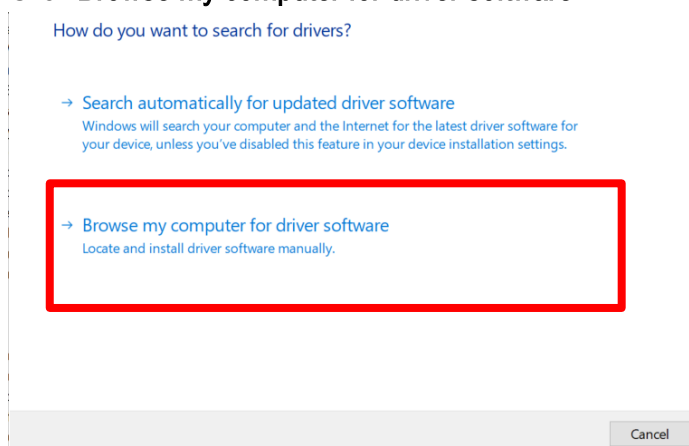
If you see **PL2303TA...CONTACT YOUR SUPPLIER**, please proceed to step ④.

- ✓  Ports (COM & LPT)
  -  Prolific PL2303GS USB Serial COM Port (COM7)  
Driver is working.
- ✓  Ports (COM & LPT)
  -  Prolific USB-to-Serial Comm Port (COM26)  
Driver is working.
- ✓  Ports (COM & LPT)
  -  PL2303TA DO NOT SUPPORT WINDOWS 11 OR LATER, PLEASE CONTACT YOUR SUPPLIER.  
Go to step ④.

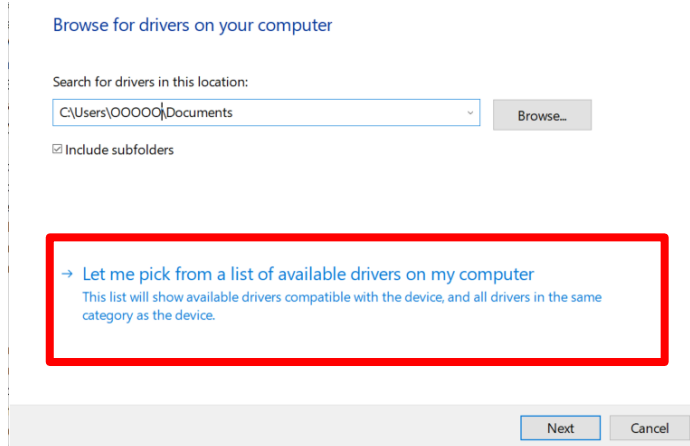
- ④ Right-click **PL2303TA...CONTACT YOUR SUPPLIER** and choose **Update driver** from the context menu.



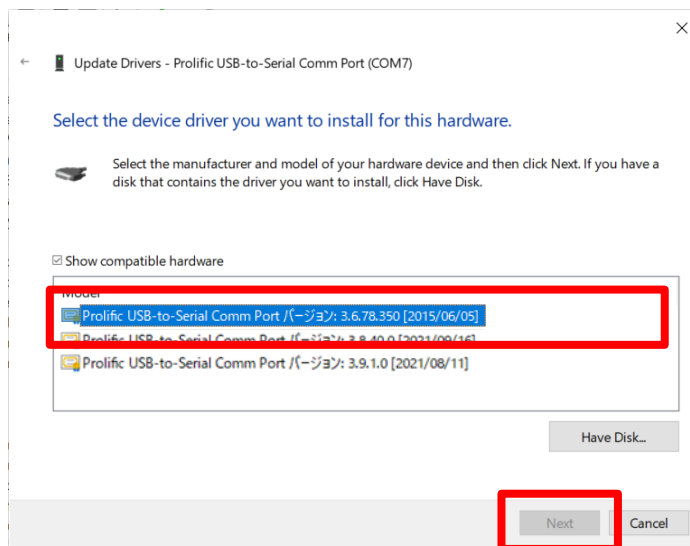
- ⑤ Click **Browse my computer for driver software**.



- ⑥ Click **Let me pick from a list of available drivers on my computer**.

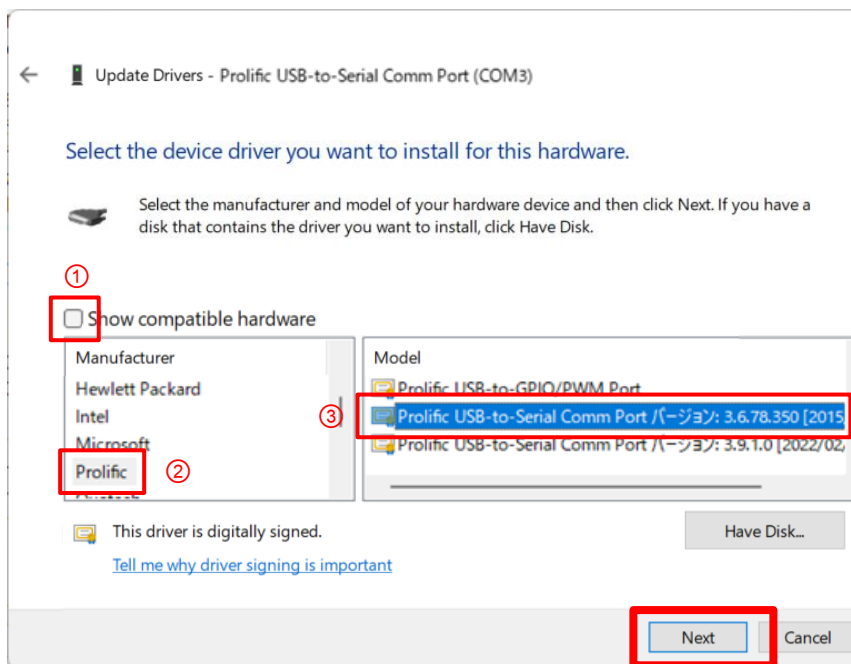


- ⑦ Choose **Prolific ... Version: 3.6.78.350** from the list of compatible hardware (★1) and click **Next**.



★1: If you only see **Prolific USB-to-Serial Comm Port** without a version number and can't select anything else...

Install a Studuino-compatible device driver and follow the steps below as well as the picture on the next page to choose it:



- ① Uncheck the box next to **Show compatible hardware**.
- ② Choose **Prolific** in the left column.
- ③ Scroll down the list of models on the right. If there are multiple drivers starting with **Prolific USB-to-Serial Comm Port**, choose the one at the top before clicking **Next**.

- ⑧ After completing the update, you should see **Prolific USB-to-Serial Comm Port (COM\*)**★ appear in the Device Manager. Your Studuino can now connect to your computer.

★ This port (COM26) may be different for your computer.

- ▼ Ports (COM & LPT)
  - 🖨 Prolific USB-to-Serial Comm Port (COM26)

## 3. Mac OS X

The device driver has to be installed manually on Mac OS X.

### 3.1. Manual Installation

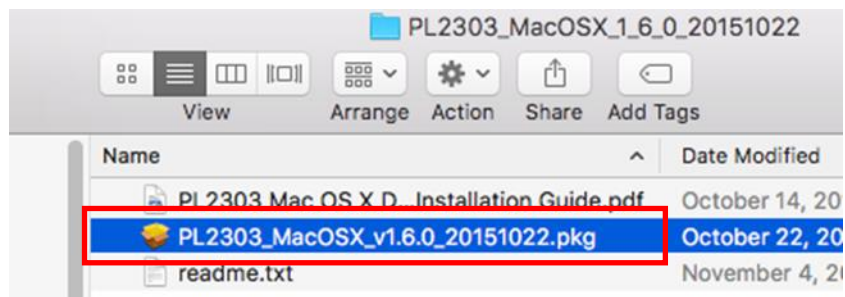
Download the installation file in advance before proceeding. If your computer doesn't have an active Internet connection, download the file on a computer with an active connection and use a USB stick or other device to transfer it to your computer.

#### 3.1.1. Downloading the Driver

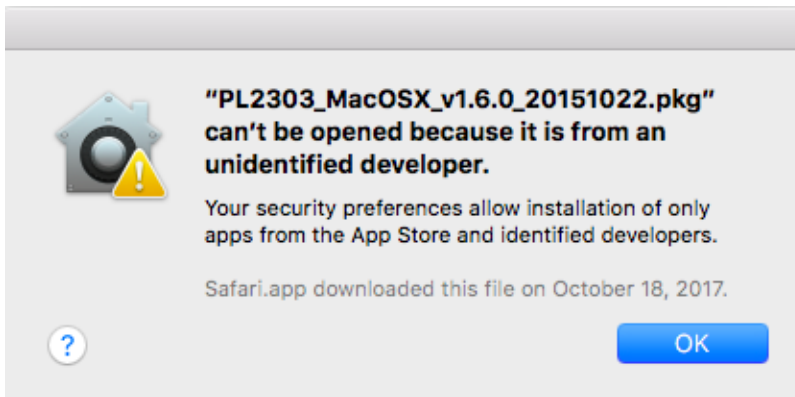
- ① Go to the Studuino website at <http://www.artec-kk.co.jp/studuino/en/>.
- ② Mouse over the **Software** section and choose **Studuino**.
- ③ Click **Mac OS X** under the **USB Device Drivers** section to download the software.

#### 3.1.2. Installation

- ① Decompress the downloaded file and run **PL2303\_MacOSX\_v1.6.0\_20151022.pkg** (filename may vary depending on the version of the software).



★ Security settings for OS X 10.8 (Mountain Lion) or later will block the installation and display this message.



If this happens, hold down the **control** key and click **PL2303\_MacOSX\_v1.6.0\_20151022.pkg**. Click **Open** in the context menu.

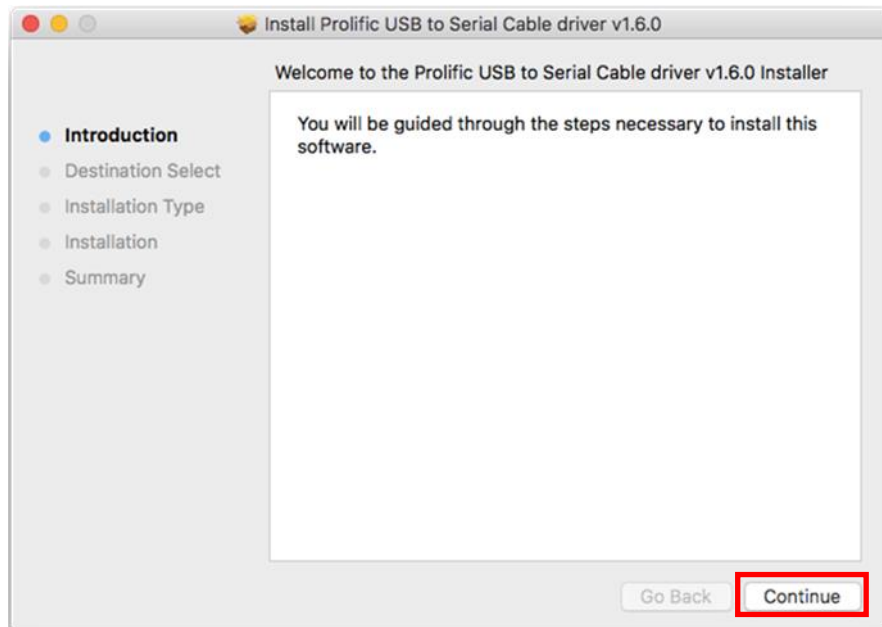


A message will appear. Click **Open**.

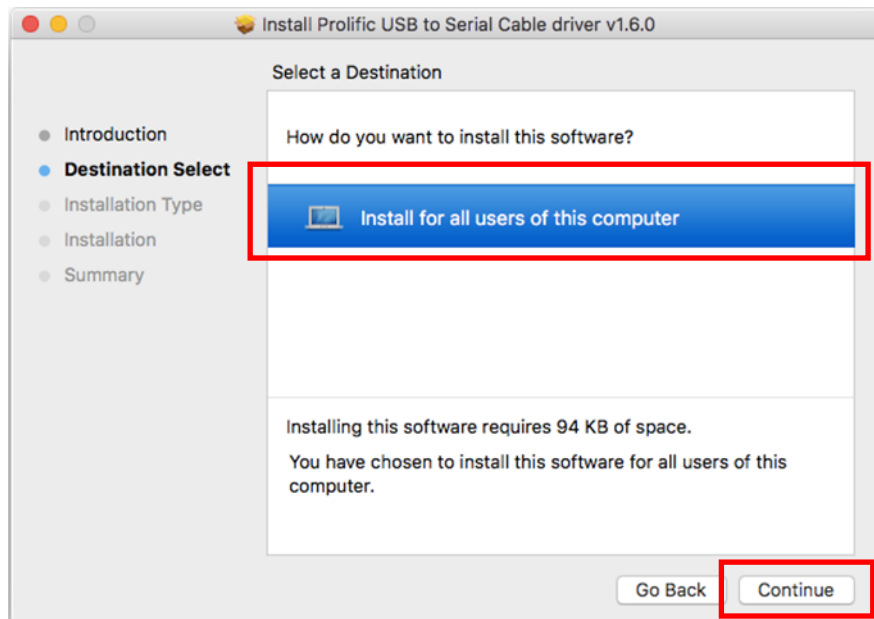


② The installation will start. Follow these steps to install the driver:

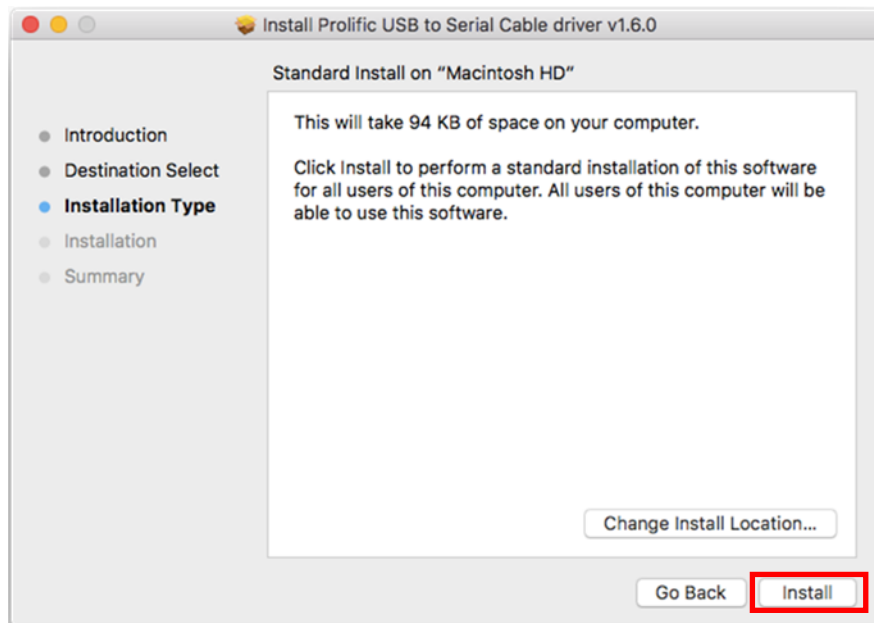
1. Click **Continue**.



2. Choose **Install for all users of this computer** and click **Continue** once it becomes available.



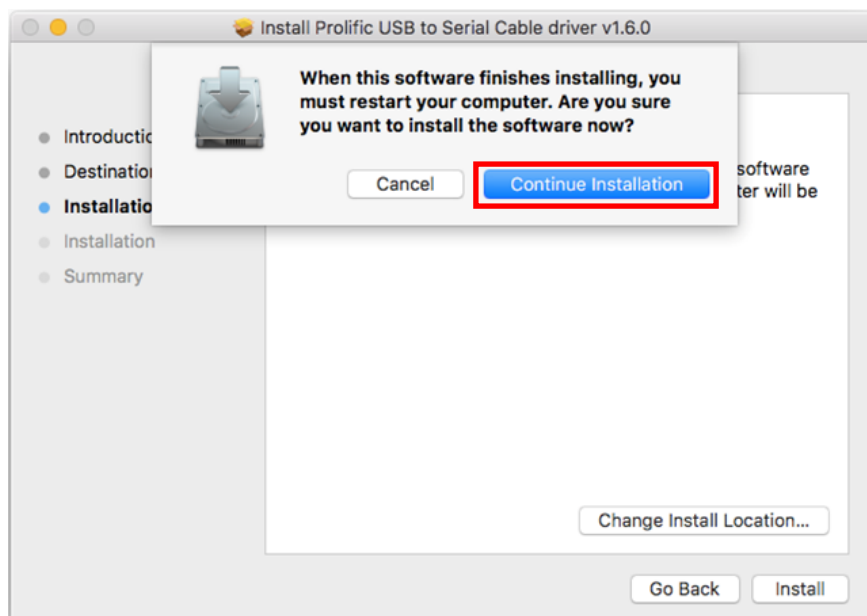
3. Click **Install**.



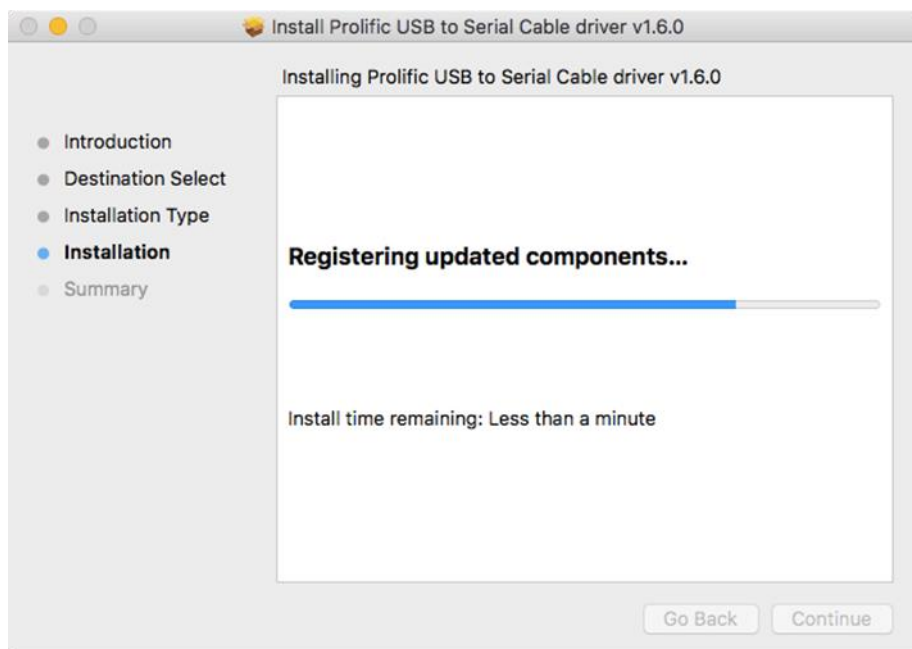
4. Enter your password and click **Install Software**.



5. You'll see a confirmation message. Click **Continue Installation**.



6. This will start the installation.



7. Click **Restart** once the installation has finished.

Your device driver is now installed.

